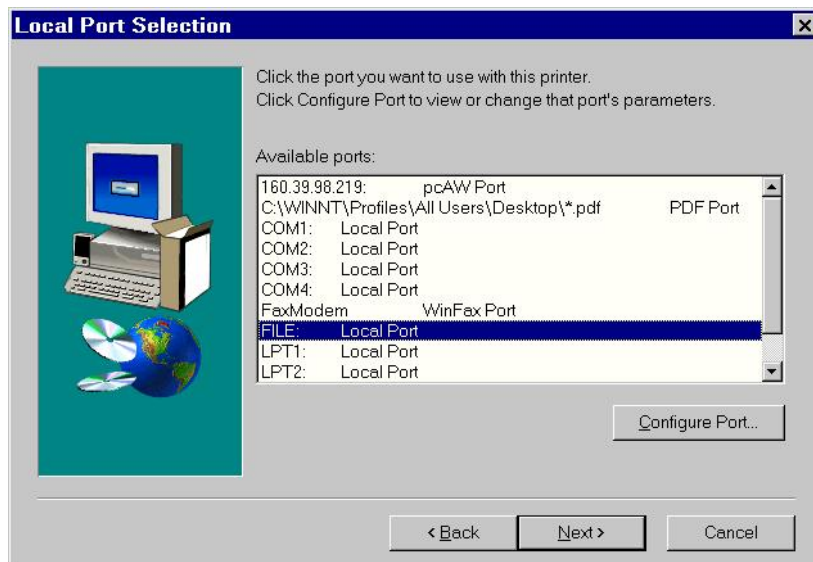


Offset Printing & Adobe Acrobat PDF Conversion Distiller Print Driver Setup for Windows XP

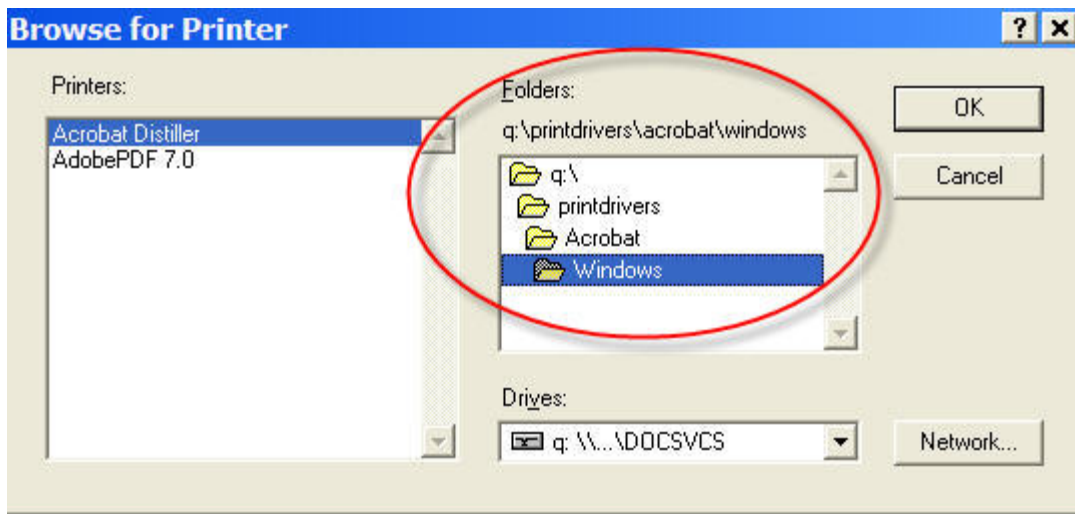
User must be logged on with Administrator rights.

We recommend that you print out these instructions for easier reference.

1. Quit any open applications, including anti-virus software.
2. Double Click on **My Computer... (Q) Docsvcs on 'Diana\Data'... Print_Drivers...Acrobat...Windows.**
3. Double-click **winsteng.exe** to begin the installation of the Adobe PostScript Print Driver wizard and **ACCEPT** the license agreement.
4. If you already have a PostScript printer installed for your computer, you may get a message window asking what type of printer you want to install. (If this message does not appear, skip to the next step.) Confirm that you want to **Install a new PostScript printer** and click **Next**.
5. In the **Printer Connection Type** window, check that your printer is **directly connected to your computer (Local Printer)** and click **Next**.
6. The **Local Port Selection** window will come up. In the list of available ports, highlight **FILE: Creates a file on disk**, then click **Next**. [\[see screen shot below\]](#)



7. The **Select Printer Model** window will appear, with **Generic PostScript Printer** highlighted. Do **not** select this printer. Instead, click **Browse**.
8. The **Browse for Printer** window will appear. Select the following directory: **Q:\Print_Drivers\Acrobat\Windows**. When you reach that directory, the **Printer Model** dialog box will appear again; make sure that the **Acrobat Distiller** is highlighted, then click **Next**. [\[see screen shot on next page\]](#)



9. The **Printer Information** window then comes up, showing the printer name **Acrobat Distiller**. Change the printer name to **PS File**, so you can easily identify this “printer” as one that creates a **PostScript File**. In the same window, check **No** next to “Do you want to use this printer as your default printer?” and **No** next to “Would you like to print a test page?”; then click **Next**. [\[see screen shot below\]](#)



10. Your settings will appear in the **Setup Information** window; verify that this printer will **print to a file**, that it is **not the default** printer, and that a test page will **not be printed**. If this is true, click on **Install**; otherwise, click on back to make corrections.
11. Check **No** in the **Printer Configuration** window, and then click on **Next** to let the installation finish. The **Setup Complete** window will appear. Click on **Finish** to complete the Setup and view the **ReadMe file** in **WordPad**, if you wish. You may print this document to your default printer.
12. **Set Defaults**: Open the **Printers** window by clicking **Start...Settings...Printers**. Right-click on the PS File Printer and select **Printer Preferences**, then click on **Advanced**. Under **Graphics Resolution**, select the **1200 dpi** option and click **OK**. Your PS File “printer” setup is complete.